

City of Moreno Valley

Riverside County Sheriff's Office Moreno Valley Station

SERVICE AND FUTURE NEEDS DISCUSSION



Moreno Valley Sheriff Station

“The need to provide public safety services to our community with fairness, equity, and justice is not new to our organization. It is deeply engrained into our history and values.”



Captain Ken Reichle
Moreno Valley Chief of Police



CURRENT CONTRACT PERSONNEL

158 Sworn Deputies

- Patrol Deputies, Corporals, Investigators, Sergeants, Lieutenants, Captain

52 Classified Employees

- Office Assistants, Community Service Officers, Accounting staff, etc.

210 Total Contract Employees



Command Staff



Lt. Scott Burns
Patrol



Lt. Al Campa
SET



Lt. Howard
Hibbler
Patrol



Lt. Sam
Morovich
Investigations

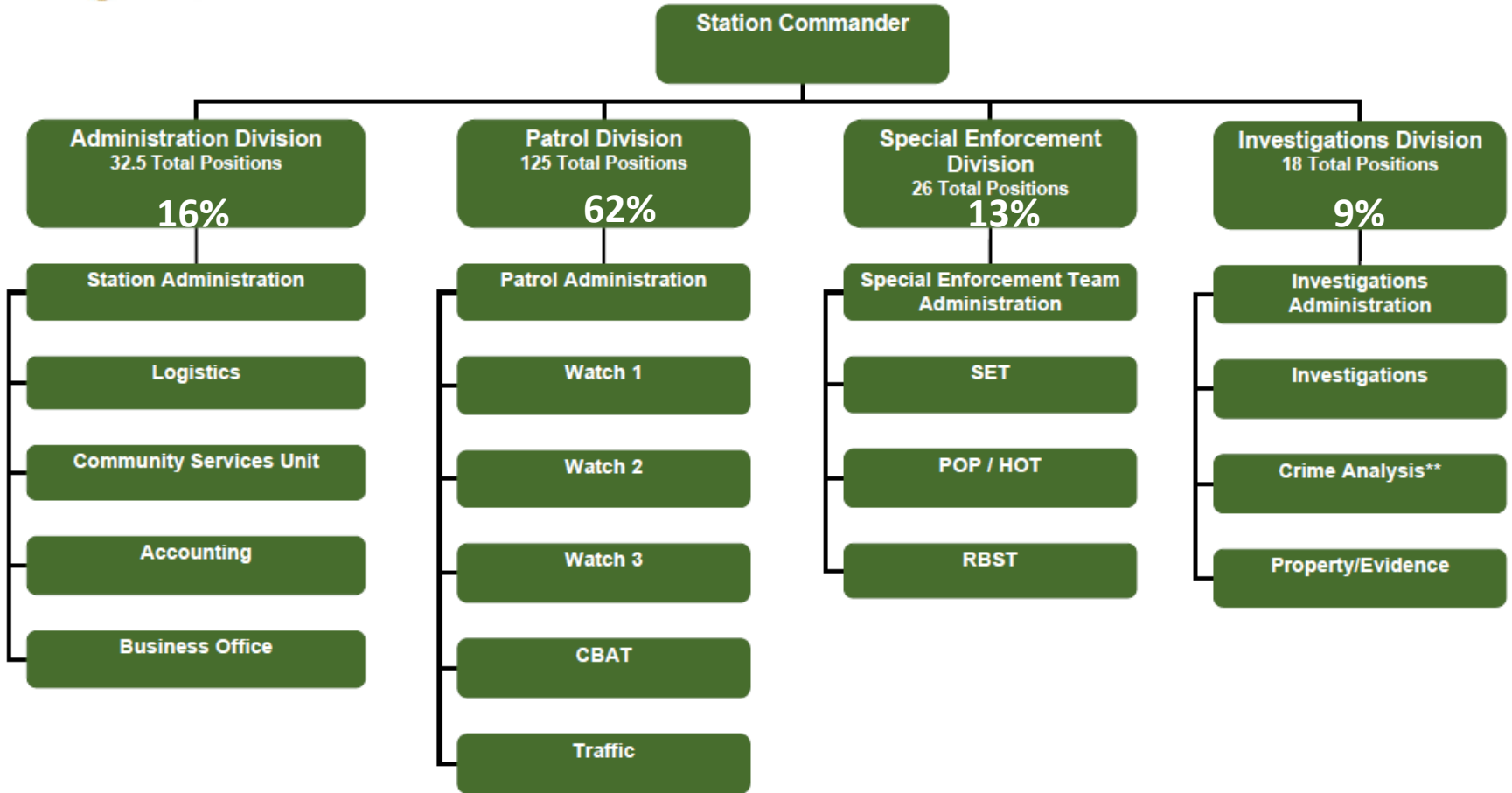


Lt. Tyson Voss
Administration





Riverside County Sheriff's Office Moreno Valley Station



**Not Included in City Contract

PATROL



- PATROL
- CBAT
- TRAFFIC



SPECIAL ENFORCEMENT TEAM

- Robbery/ Burglary Suppression
- Gangs
- Narcotics
- Homeless Outreach
- Problem Oriented Policing



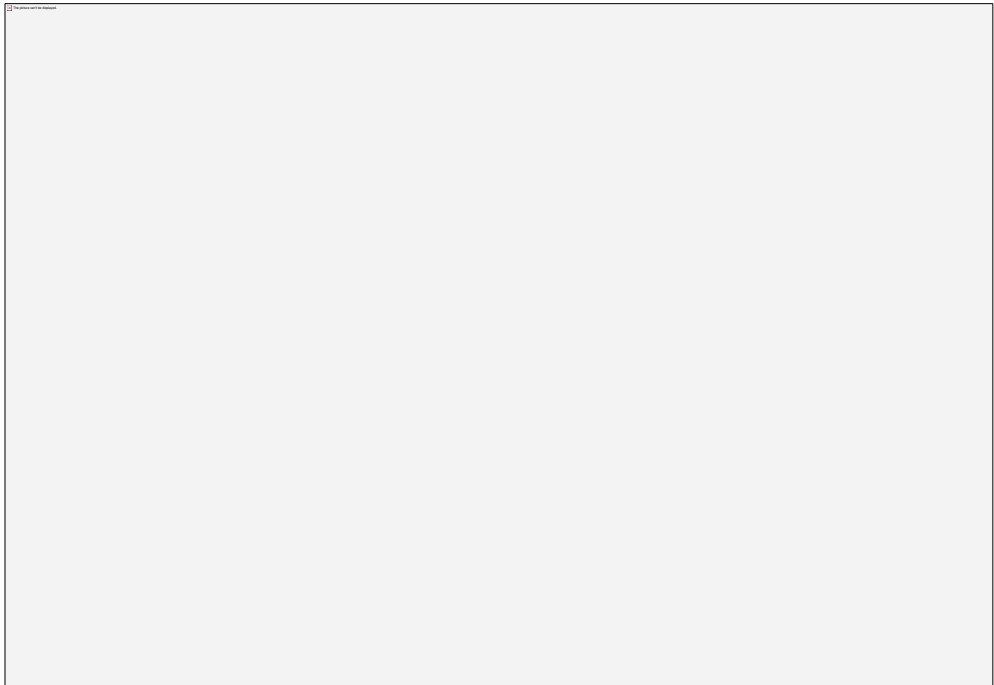
INVESTIGATIONS

- Respond to critical incidents
- Conduct follow-up on major crimes investigations
- Track convicted sex crime registrants
- Daily crime analysis
- Death investigations
- Elder abuse / Child abuse
- Fraud



ADMINISTRATION

- Command Staff
- Business Office
- Accounting
- Logistics
- Community Services



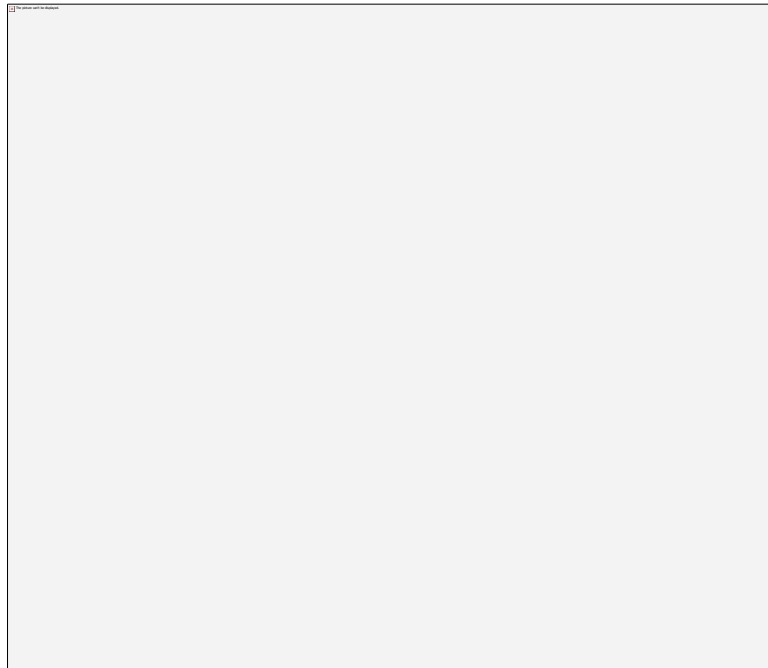
Current Resources

Current Contract: \$53.9 M

- 158 sworn deputies

Technology Deployment

- Citywide Cameras
- Flock



More than 1,000 incidents per year investigated using the camera system.

Moving Into the Future

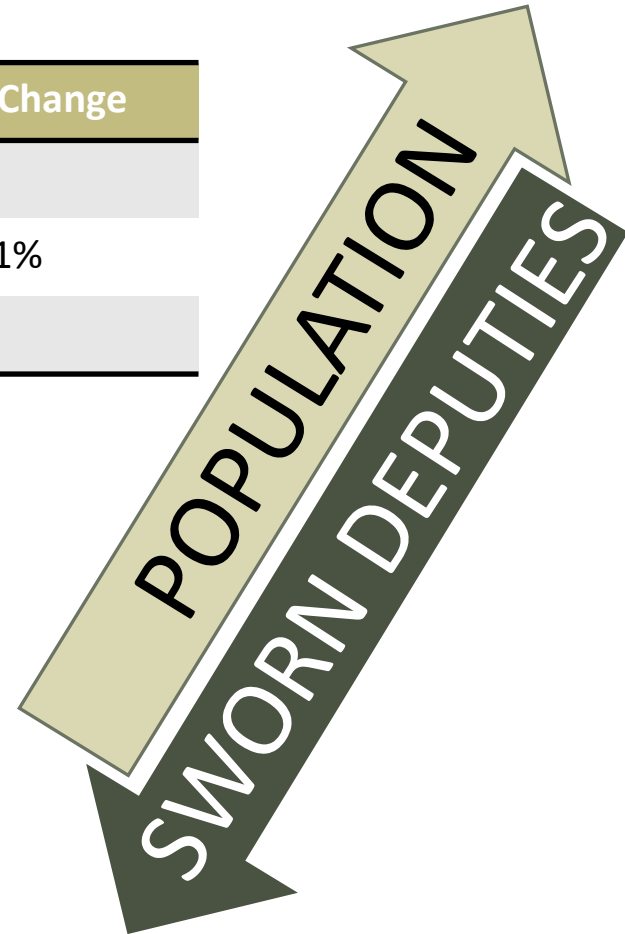
Impacts Commencing in 2011

- Moreno Valley Council eliminates 28 Deputy positions.
- AB 109
- Prop 47 (2014)
- Prop 57 (2016)
- CDCR Prison Population – Released to our communities
- Current Recruitment / Retention Issues Nationwide



Challenge: Personnel / Population Imbalance

	2010	2023	% Change	2025	% Change
Population	193,365	217,197	12.3%		
Sworn	186	158	-15%	166	-11%
Non-Sworn	56	51	-9%	51	



2022 Year At a Glance

Total calls for service: **131,516 (Priority 1-9)**

Average daily calls for service: **360**

The total calls for service for priority **1-4: 68,930**

Priority	Calls for Service	Average Response	Average calls Per day
1	2194	7.9 Minutes	6
2	27,730	33.76 Minutes	76
3	25,330	93.25 Minutes	69
4	13,676	159.27 Minutes	37



Flash Back

2010 Year At a Glance

Total calls for service: **133,780 (Priority 1-4)**

Average daily calls for service: **367**

The total calls for service for priority **1-4: 68,216**

Priority	Calls for Service	Average Response	Average calls Per day
1	1,376	6.17 Minutes	4
2	25,297	13.9 Minutes	69
3	25,330	33.4 Minutes	68
4	16,508	50.63 Minutes	45



2010 – 2022

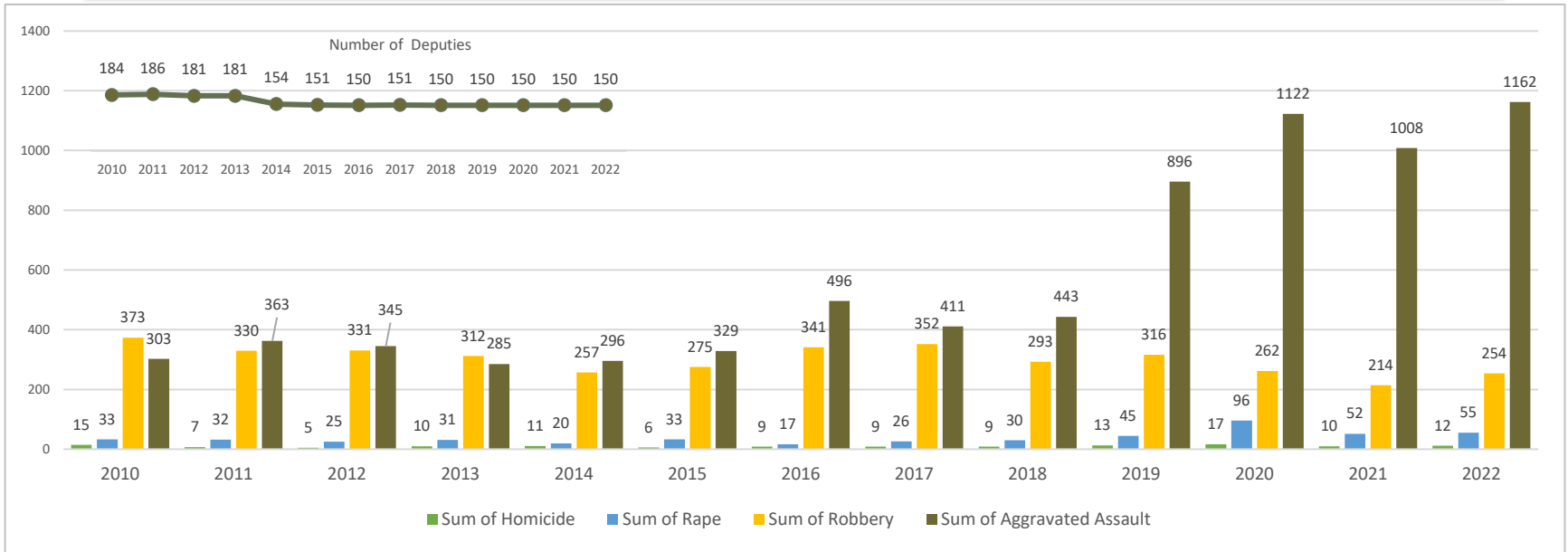
Response Time Comparison

Priority	2010 Average Response Times	2022 Average Response Times	Percentage Change
1	6.17 Minutes	7.9 Minutes	↑ 28%
2	13.9 Minutes	33.76 Minutes	↑ 143%
3	33.4 Minutes	93.25 Minutes	↑ 179%
4	50.63 Minutes	159.27 Minutes	↑ 215%



2010 – 2022

Violent Crime Data Comparison



Violent Crime	2010	2011	2012	2013	2014	2015	2016	2017	2018	2019	2020	2021	2022
Homicide	15	7	5	10	11	6	9	9	9	13	17	10	12
Rape	33	32	25	31	20	33	17	26	30	45	96	52	55
Robbery	373	330	331	312	257	275	341	352	293	316	262	214	254
Aggravated Assault	303	363	345	285	296	329	496	411	443	896	1,122	1,008	1,162
Total	724	732	706	638	584	643	863	798	775	1,270	1,497	1,284	1,483

Challenge: Unmet Standards

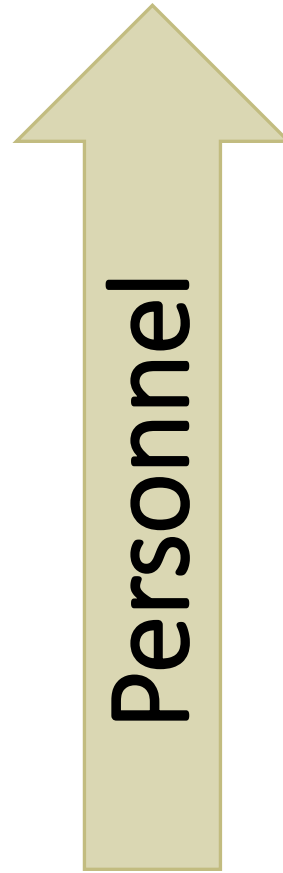
Acceptable law enforcement standard: 1 deputy per 1000 residents

Cities above 200,000 Officer Ratio Comparison

Rank	City	Police Budget	Population	Per Capita	Officer Ratio	Sworn	Non-Sworn
1	Riverside	\$108,748,734	314,998	345.24	1.33	420	184
2	San Bernardino	\$92,622,058	216,291	428.23	1.25	270	118
3	Fontana	\$74,009,490	213,944	345.93	0.93	198	112
4	Moreno Valley	\$53,936,492	217,197	248.33	0.73	158	51



Solutions



Technology Based Solutions



- Improved Reporting
 - Telephone & Online reporting
- Increase Citywide and Flock Cameras
 - Force Multiplier: Solve more crime
 - Additional flock cameras
- Purchase Video Analytic
 - Increase search ability less human time
- Citywide Camera Flock Integration
- Gun Shot Detection
 - Raven (Flock)
- Increased use of UAV Technology
 - Improve response times
 - Increase situational awareness
- Real Time 911
 - Increased situational awareness

Personnel Based Solutions

Deputy to Resident Ratio		Population			
		217,197		300,000	
		Additional Deputies	*Approximate Cost	Additional Deputies	*Approximate Cost
Standard Ratio	1 : 1000	59	\$24,485,000	142	\$58,930,000
Adjusted Ratio	.78 : 1000	12	\$4,980,000	77	\$31,955,000



*Projected costs not adjusted for inflation

**Projects costs do not include personnel and equipment costs associated with staffing

Facilities Needs

Facilities	Estimated Project Costs	
	Years 1-3	2030-2040
PSB Evidence Room Improvements	\$150,000	
PSB South Hallway Remodel	\$1,500,000	
PSB Conversion Phase I		\$66,297,700
PSB Conversion Phase II & III		\$ 73,143,000
Southeast Moreno Valley Public Safety Joint Use Station		\$37,500,000
Estimated Costs	\$1,650,000	\$176,940,700



Nutshell

Unmet Needs	Current Need		Build Out	
Technology Needs	\$	1,751,000	\$	4,500,000
Personnel Needs (1:1000)	\$	24,485,000	\$	58,930,000
Facilities Needs	\$	1,650,000	\$	176,940,700
Projected Estimate	\$	27,886,000	\$	240,370,700

* Projections are for initial hard costs only and do not include maintenance, inflation, replacement, expansion.

