



Emergency Response Force



How to Become a Member

April 2, 2008



Mission Statement

- ◆ Members will consist of a professionally trained, multi-level volunteer disaster services team.
- ◆ Serve the City of Moreno Valley and its citizens in a professional manner.
- ◆ Assist Public Safety and the citizens of Moreno Valley in emergency and disaster situations.
- ◆ Provide the highest level of proficiency and care, within our capabilities.
- ◆ Maintain the highest respect for public safety personnel, rescuers and victims.
- ◆ Promote and conduct emergency preparedness training in our community.
- ◆ Provide needed assistance and quality first aid at City functions and special events.



Overview of Emergency Response Force

The Emergency Response Force (ERF) is a volunteer program supervised by the Emergency Operations and Volunteer Services Program Manager. Its members consist of professional volunteers who have a background as a First Responder, EMT or Paramedic. Regardless of their background, all ERF members are trained to provide emergency care. Here is an example of the training ERF members receives:

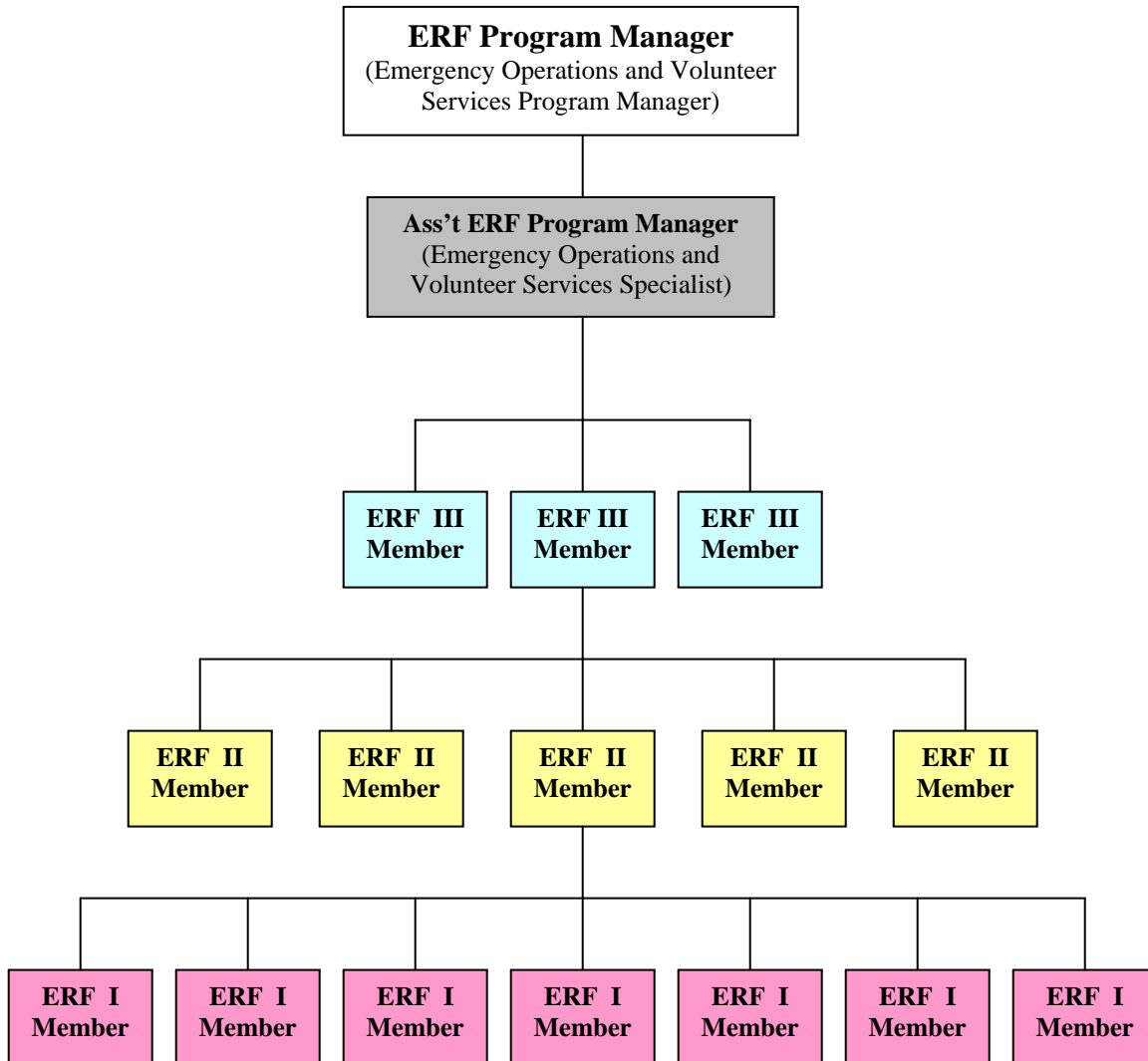
- AHA BLS Healthcare Provider
- AHA First Aid
- AHA Heartsaver AED
- Emergency Response to Terrorism
- Care & Shelter Operations
- Crisis Intervention
- Standardized Emergency Management System (SEMS)
- National Incident Management System (NIMS)
- Incident Command System (ICS)
- Community Emergency Response Team (FEMA CERT)
- Damage Assessment
- Traffic Control
- Driving Safety
- Search & Rescue
- Triage
- Evacuation Techniques
- EOC Support

ERF members are trained to provide emergency rehabilitation for public safety personnel, which includes blood pressure, pulse and respiration monitoring if required; evacuation assistance; shelter set-up & management; search and rescue; and first aid for emergency & special events. Because of these activities, an ERF member must be able to lift at least 40 pounds.

ERF rigs are equipped with emergency and first aid equipment, tools and radios. Also stocked are generators, lights, heaters, E-Z ups, fans, misters, cots, chairs, tables, triage tarps, ice, coffee, water, Gatorade and snacks. The back of the rig is equipped to provide quick cooling of victims using the a/c system. Unless a large disaster situation arises, absolutely no transporting of victims will occur.



Emergency Response Force Flow Chart





Required Attendance and Training Sessions

Attendance

Attendance of ERF members at functions including monthly meetings and training sessions, special events, and emergency incidents are imperative to the success of the ERF program.

Those members, who are unable to attend monthly meetings and training, should contact the Assistant ERF Program Manager or ERF Program Manager to obtain an excused absence. Failure to obtain an excused absence will result in an unexcused absence. Three unexcused absences in a row may result in termination from the group.

Monthly Meetings and Training Sessions

Members are required to attend as many monthly meetings and training sessions as possible. All members need to make every effort to be on time for all meetings. It is during the monthly meetings and training sessions, that critical information is disseminated to members. It is the responsibility of the absent member to obtain the missed information through the Assistant ERF Program Manager.



To become an ERF member you need to complete the following requirements:

ERF I Level

Requirements:

All prospective ERF members must meet the following requirements before advancing to the ERF I level:

- Be at least 18 years of age
- Successfully complete background check
- Complete DMV check
- Possess a current AHA Healthcare Provider Card
- Possess a current Cal-Osha approved First Aid Card
- Complete City of Moreno Valley Emergency Operations and Volunteer Services Application
- Attend three monthly meetings
- Be able to lift at least 40 pounds.

ERF I Members will be issued the following:

- Navy Blue t-shirt (issued by City – yours to keep, \$15 for each additional shirt)
- White Uniform shirt (issued by City – must be returned upon resignation or separation)
- ERF Hat
- City of Moreno Valley ERF Photo ID (issued by City – must be returned upon resignation or separation)

ERF I Members will be required provide the following:

- Navy Blue/Black Pants/Jeans (absolutely no faded jeans)
- Dark colored boots or strong shoes



Emergency Response Force

ERF 2 Level

Requirements:

ERF members will meet the following requirements in order to advance to the ERF 2 Level:

- Complete all requirements for ERF 1 Level
- Complete 18 hour FEMA CERT course*
- Complete Emergency Response to Terrorism Course*
- Complete City of Moreno Valley SEMS/NIMS/ICS Training*
- Complete ERF Driving course*

Duties Include:

- Authorized to drive ERF rig
- Supervise ERF I staff
- Responsible for ERF rig supply restock after an incident
- At ERF Program Manager's discretion, a Honeywell card could be issued.

* All training offered by Emergency Operations and Volunteer Services Program



Emergency Response Force

ERF 3 Level

Requirements

ERF members will meet the following requirements in order to advance to the ERF 3 Level:

- Complete all the requirements of ERF 2 Level
- Be an active ERF member for 1 year
- Possess a current EMT 1 certification through Riverside County

Duties Include:

- Authorized to drive ERF rig
- Authorized to carry Honeywell card key for ERF room access
- Supervise ERF I and ERF 2 staff
- Responsible for ERF rig supply restock after an incident
- Supervise emergency situations

For additional information, please contact
Emergency Operations and Volunteer Services at 951.413.3800