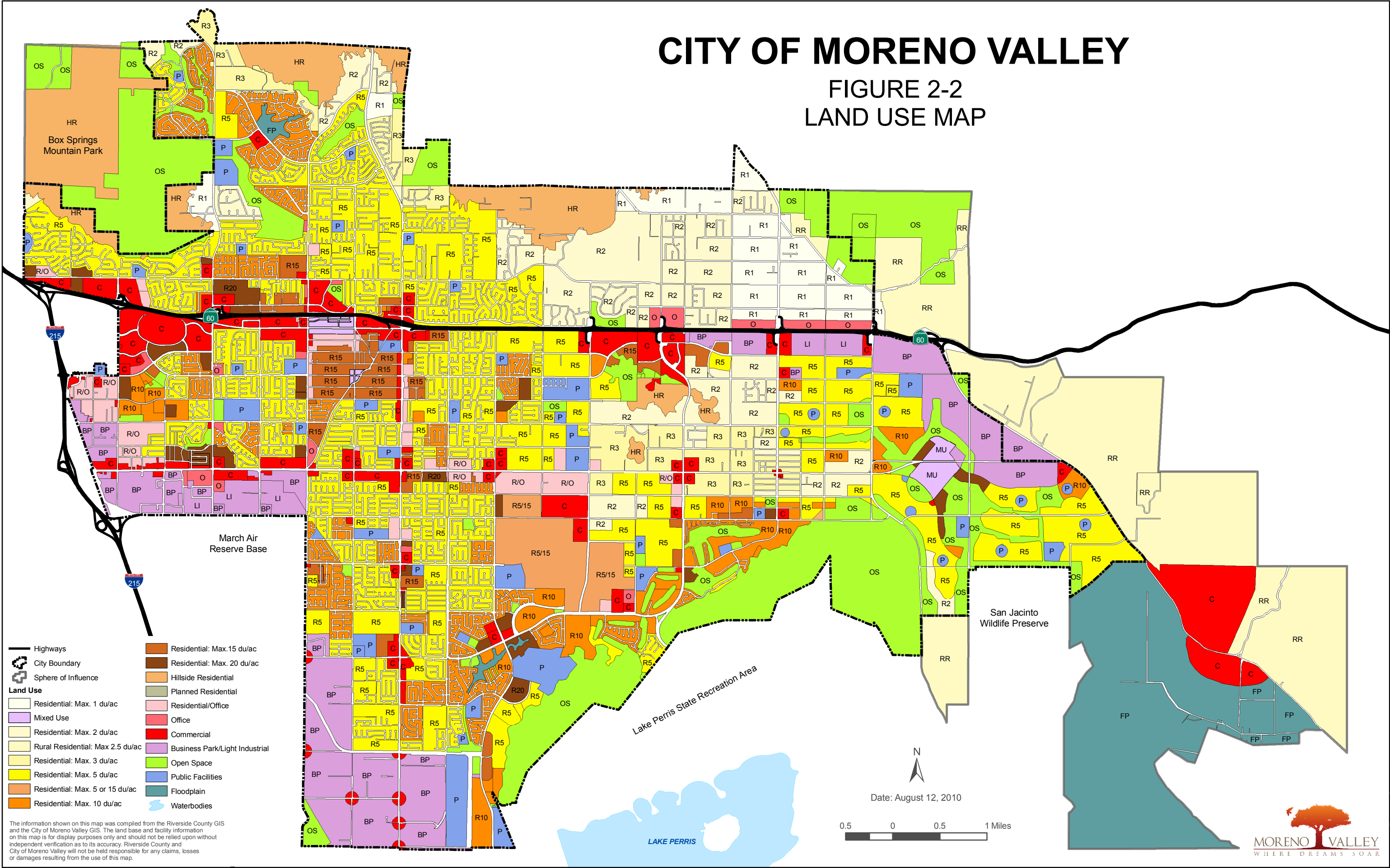


# CITY OF MORENO VALLEY

## FIGURE 2-2 LAND USE MAP



- Highways
  - City Boundary
  - Sphere of Influence
- Land Use**
- Residential: Max. 1 du/ac
  - Mixed Use
  - Residential: Max. 2 du/ac
  - Rural Residential: Max 2.5 du/ac
  - Residential: Max. 3 du/ac
  - Residential: Max. 5 du/ac
  - Residential: Max. 5 or 15 du/ac
  - Residential: Max. 10 du/ac
  - Residential: Max. 15 du/ac
  - Residential: Max. 20 du/ac
  - Hillside Residential
  - Planned Residential
  - Residential/Office
  - Office
  - Commercial
  - Business Park/Light Industrial
  - Open Space
  - Public Facilities
  - Floodplain
  - Waterbodies

The information shown on this map was compiled from the Riverside County GIS and the City of Moreno Valley GIS. The land base and facility information on this map is for display purposes only and should not be relied upon without independent verification as to its accuracy. Riverside County and City of Moreno Valley will not be held responsible for any claims, losses or damages resulting from the use of this map.

Date: August 12, 2010

0.5 0 0.5 1 Miles

